

Arizona CSPD Pre-Service Resource Padlet

This document is designed to be an interactive tool to connect stakeholders in early childhood, special education, and early intervention pre-service preparation programs to high-quality resources.

BJORG LESUEUR AUG 04, 2022 09:18PM UTC

CSPD Pre Service

CSPD Pre-Service Mission

The mission of the CSPD Pre Service is to provide guidance to IHE programs and confirm curricula for each discipline are based on knowledge and skill competencies that are aligned with state personnel standards. Ensure that the IHE programs and curricula for each discipline are based on knowledge and skill competencies that are aligned with national professional organization personnel standards. Assist IHE programs and curricula for each discipline are aligned with state and local program quality initiatives and evaluation systems (e.g., QRIS, educator effectiveness frameworks, licensing)



Pre-service is the term used to describe the education and training that occurs prior to a practitioner obtaining a college degree and entering the workforce. Pre-service prepares individuals to meet the personnel standards of a specific discipline. Institute of Higher Education (IHE) programs of study provide training for individuals to acquire the specified knowledge, skills, and competencies required to meet state and national personnel standards in a specific discipline. The programs of study also include sufficient field-based experiences across a variety of high-quality infant and early childhood settings.

due to the diversity of needs of young children and their families

- Inequities of preparation and compensation among those providing services

An effective system must:

- Coordinate and address state needs for quantity and quality of EC personnel and their degree of support required
- Acknowledge the need for coordination between pre-service and in-service to ensure the consistent use of evidence-based practices
- Monitor progress through ongoing evaluation to assess the capacity to implement program quality standards that result in improved outcomes for children and families



licensing.

- IHE program competencies are operationalized and defined by example.
- IHE programs and curricula for each discipline are coordinated to ensure an adequate number of programs of study are available to meet personnel needs.

Why is Pre-Service PD important?

Ensuring that IHE Preservice programs are based on updated state standards and implemented following evidenced-based professional development practices leads to increased acquisition of knowledge and skills related to these standards, and ultimately and improved quality of the workforce.

Who is on the Pre-Service PD Workgroup?

Representatives include:

- State Part C and Part B/619 Coordinators
- Family Members
- Early Care and Education Organizations
- State certification/Licensure Representative

CSPD-4-Preservice.pdf

PDF document

ECPCTA.ORG

Developing Leadership

Leadership Institute

Leadership Institute

The Leadership Institute for Cultural Diversity and Cultural and Linguistic Competence is a collaborative, multifaceted initiative with a goal to increase the number and capacity of leaders to advance and sustain cultural and linguistic competence (CLC) and respond to the growing cultural diversity among people with intellectual and developmental disabilities (I/DD) in the United States, its territories, and tribal communities.

GEORGETOWN



Family-Centered Practice

ECTA Center: National Resources on Family Engagement

ECTA Center: National Resources on Family Engagement

The following list provides support to grantee's activities and strategies to maximize parental choice and knowledge as outlined in the PDG B-5 grant funding opportunity announcement.

ECTACENTER.ORG



Federal Guidance, Tools, and Resources

ECTA Center: National Resources on Family Engagement

The following list provides support to grantee's activities and strategies to maximize parental choice and knowledge as outlined in the PDG B-5 grant funding opportunity announcement.

ECTACENTER.ORG



National Center for Cultural Competence

NCCC | home

NCCC is to increase the capacity of health care and mental health care programs to design, implement, and evaluate culturally and linguistically competent service delivery systems to address growing diversity, persistent disparities, and to promote health and mental health equity.

GEORGETOWN



Community Services and Support - Strong Families AZ

Strong Families AZ provides a list of resources for families in Arizona for support, information, financial assistance, and more. Get the resource you need!

STRONG FAMILIES AZ



Arizona childrens.org

Home - Arizona's Children Association

We're Hiring! Join the AzCA team today See Our Open Positions

ARIZONA'S CHILDREN ASSOCIATION



Collaboration across disciplines - policy - change

The PROGRESS CENTER

Home | Progress Center

With the extended school closures happening throughout the United States, many States, districts, schools, parents, families, and students are having to learn in entirely new ways and facing...

PROMOTINGPROGRESS

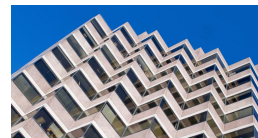


Bipartisanpolicy.org

Bipartisan Policy Center

BPC's health team strives to develop bipartisan policies that improve the nation's health outcomes and reduce preventable health care costs. The policy areas we focus on span public health and prevention; coverage, payment, and delivery of health services and long-term care; biomedical research; and innovative technologies.

BIPARTISANPOLICY



Early Childhood Special Education Events

<https://www.azed.gov/specialeducation/early-childhood-special-education-events>

Early Childhood Special Education Events

Events SY 2021-2022 July 20 Child Outcomes TSG Checkpoint due date (ESY) July 27-30 Teaching Strategies Gold Teacher Training (cancelled) July 28 Lessons from the Field: Returning to School: Strategies for Supporting Staff (12:00-1:15pm) August 10-13 Teaching Strategies Gold Teacher Training and A...

ARIZONA DEPARTMENT OF EDUCATION



ECSE Resources

ADE ECSE Website Link

Early Childhood Special Education

blocks.png Early Childhood Special Education is a state and federally mandated program for children aged 3-5 who meet state eligibility criteria because they are experiencing developmental delays. School districts and other public agencies are responsible for locating, identifying, and evaluating eligible children and for offering a free appropriate public education (FAPE).

ARIZONA DEPARTMENT OF EDUCATION



DEC

Division for Early Childhood of the Council for Exceptional Children

The Division for Early Childhood (DEC) promotes policies and advances evidence-based practices that support families and enhance the optimal development of young children (0-8) who have or are at risk for developmental delays and disabilities.

DEC



PD Opportunities and Training

Itinerant Model - Community of Practice

Itinerant Model - Community of Practice

Picture5.jpg The Itinerant Early Childhood Special Education Service (IECSE) Delivery Method is a model developed by Drs. Laurie Dinnebeil and William McInerney. The model supports the inclusion of young children with disabilities whose primary placement is a community based program such as a private preschool, childcare center, or Head Start classroom.



ARIZONA DEPARTMENT OF EDUCATION

Home

Missed the Spirit of the Child Breakfast? Help make our work possible. Watch Recording Their future is our future. You are the change. Donate now UpLearning Virtual Training Series Designed with you in mind. Register Act today. Improve tomorrow. Use your time to enhance children's lives. Get In

CANDELEN



PELE Project: LEAP Preschool Model Implementation

PELE Project: Implementing LEAP Preschool Model

PELE Project Banner The PELE Inclusion Project will support the development of high quality inclusive practices in participating school district preschool programs that offer services to children with disabilities of ages three through five years old.



ARIZONA DEPARTMENT OF EDUCATION

ECE PD Opportunities

EARLY CHILDHOOD EDUCATION Comprehensive List of Professional Learning Opportunities



**Arizona Department of Education
Early Childhood Education (ECE)**

www.azed.gov/ece | 602-364-1530

Pyramid Model

The Pyramid Model Project

pyramid model.png The Pyramid Model is a comprehensive, multi-tiered framework of evidence-based practices that promote the social, emotional, and behavioral development of young children. The Pyramid Model focuses on promoting positive behavior and addressing challenging behavior (Hemmeter, Ostrosky, & Corso, 2012).



ARIZONA DEPARTMENT OF EDUCATION

Ed.Web.net - webinars and training

edWeb: A professional online community for educators

edWeb is a free online community for professional educators, offering networking, resource sharing, collaboration, and professional development webinars.



EDWEB

Candeleen

ADE%20ECE%20PL%20Comprehensive%20List.pdf

PDF document

WWW.AZED.GOV

SEL Resources, Links, Curriculum

Center on the Developing Child Harvard University

Center on the Developing Child at Harvard University

Our mission is to drive science-based innovation that achieves breakthrough outcomes for children facing adversity.

CENTER ON THE DEVELOPING CHILD AT HARVARD UNIVERSITY



Promoting Healthy Mental Development: A Bright Futures Online Curriculum

Self-esteem develops as children experience love and responsiveness as part of a positive parent-child relationship. Parents can support children's feelings of self-esteem by helping them to feel component and by accepting their child's personal style. To foster children's self-esteem, parents need to provide them with a warm and nurturing environment as well as with opportunities that encourage a sense of individuality.

BRIGHTFUTURES



SEL Lesson-based SEL Curricula List

KSDE TASN

Social Emotional Programs to Support Social Competencies in all students

KSDETASN.ORG

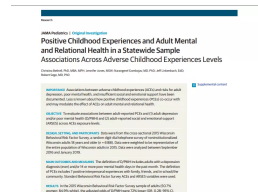


HOPE

HOPE - Healthy Outcomes from Positive Experiences

HOPE - Healthy Outcomes from Positive Experiences - is a new way of seeing and talking about experiences that support children's growth and development into healthy, resilient adults. We now know that that even in the face of adversity, key positive experiences help us heal.

HOPE - HEALTHY OUTCOMES FROM POSITIVE EXPERIENCES



PATHS

PATHS Program LLC - Social Emotional Learning for Pre-K, Elementary, and Middle School

Social and emotional learning (SEL) is a critical component of the educational experience that is proven to lead to improvements in student behavior, reductions in classroom disruption, and greater academic achievement. Today's students face a myriad of challenges and vulnerabilities that not only impact students' learning but also educators' abilities to teach effectively.

PATHS PROGRAM LLC



SEL Implementation



Preparing-for-Effective-SEL-Implementation.pdf

PDF document

WWW.WALLACEFOUNDATION.ORG

Brightfutures.org - Georgetown

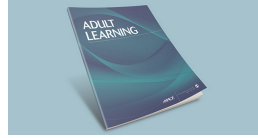
Adult Learning

SAGE Publication

Adult Learning: SAGE Journals

for adult educators to provide articles that approach practice issues with a problem-solving emphasis.

SAGE JOURNALS



ECTA Resources

Evidence-Based Practice

Evidence-Based Practice

Evidence-based practice in the field of early childhood is the process that pulls together the best available research, knowledge from professional experts, and data and input from children and their caregivers, to identify and provide services, evaluated and proven to achieve positive outcomes for children and families.

ECTACENTER



Early Childhood IDEA Centers: 2022 State Learning Opportunities



The OSEP-funded Early Childhood Technical Assistance (TA) Centers are pleased to announce a variety of new and ongoing opportunities to build individual and state capacity around implementation of IDEA 0-5. We hope this information will assist you as you consider which TA opportunities best fit your needs and priorities.

Upcoming TA Opportunities!

If the information for how to apply to one of these opportunities is not yet available, look for information in the near future from that TA Center how to participate. If none of these planned opportunities fits your needs for TA, contact your state liaisons for [CIFR](#), [DaSy](#), or [ECTA](#) to explore other TA supports.

Title	Description	Timelines	Sponsors (lead first)	Intended Audience
Leadership Virtual TA Learning Opportunities	Targeted leadership learning opportunities will be offered to support Part C and Part B (619) Coordinators to increase their individual leadership knowledge and skills. Four topical priorities have been identified by the field: leading from the middle, communication and relationship building, influencing equitable funding and access to resources and services, and developing team capacity and planning for leadership transition. State coordinators are invited to participate in one or more of these TA opportunities.	Quarterly throughout 2022	ECTA, ECPC, DaSy, NASDSE 619 Affinity Group, ITCA	Part C and Section 619 coordinators and staff
Part C Fiscal Initiative	States will be invited to submit team applications to participate in Cohort VI of the Part C Fiscal Initiative. Approximately five states will be selected to participate in this initiative, designed to increase state team leadership capacity to build and sustain an effective Part C financing system.	January 2022	ECTA, ITCA, DaSy, CIFR	Part C coordinators and state staff teams

State_Learning_Opportunities_2022_Acc.pdf

PDF document

ECTACENTER.ORG

ECE Sustainability Education Links

Childroots - Teaching Sustainability in ECE

Teaching Sustainability in Early Education | ChildRoots

At ChildRoots, teaching sustainability is a foundational part of our program from our curriculum to our meal plans. As part of our eco-mittment, we practice sustainability in a variety of ways that enhance the way children interact with the natural world.

CHILDROOTS | DAYCARE & PRESCHOOL | NW, SE, & NE PORTLAND



Natural Start

Natural Start

Join Natural Start on Tuesday, September 29 at 4 pm ET for a conversation about reopening nature preschools during the pandemic. Hear from several program directors who have transitioned their schools to be 100% outdoors this fall, followed by Q&A and discussion.

NATURAL START



Connecting Young Children with Nature

Let's Talk! Celebrating Mud Day A Conversation on Connecting Young Children with Nature

Join us for our next conversation in WoFo Global Café on International Mud Day, June 29, 2022 at 11:00 AM (New York City/Bogota/EDT), "Let's Talk! Celebrating Mud Day - A Conversation on Connecting Young Children with Nature".

WORLDFORUMFOUNDATION



0 to 3 Early Childhood Resources

Arizona Early Intervention Program

<https://des.az.gov/services/disabilities/developmental-infant>

Arizona Early Intervention Program

The Arizona Early Intervention Program (AzEIP) is Arizona's statewide interagency system of services and supports for families of infants and toddlers, birth to three years of age, with disabilities or delays. AzEIP is established by Part C of the Individuals with Disabilities Education Act (IDEA), which provides eligible children and their families access to services to enhance the capacity of families and caregivers to support the child's development.

AZ

Zero to Three

ZERO TO THREE - Early Connections Last a Lifetime

Ages zero to three are the most important for lifelong mental health and well-being.

ZERO TO THREE



Evidence Based Practices

Brookes Publishing

Professional resources and assessments for early childhood, K-12, special education, and higher education | Brookes Publishing Co.

Trusted resources for people who work with children and others with developmental disabilities and delays to help them achieve the best possible outcomes.

BROOKES PUBLISHING CO.



Head Start- Early Childhood and Knowledge Center

<https://eclkc.ohs.acf.hhs.gov/>

ECLKC

The Office of Head Start (OHS) helps young children from low-income families prepare to succeed in school through local programs. Head Start and Early Head Start programs promote children's development through services that support early learning, health, and family well-being. Learn More See the Latest News

ECLKC



Newsletters, Articles, Publications

ADE ECE Monthly Newsletter

26539d5f-6281-11ec-9321-7a2402dd9ee3

SG-FORM



Arizona Early Intervention Job Descriptions

AzEIP Developmental Special Instructionist Job Description

AzEIP Service Coordinator Job Description

https://docs.google.com/document/d/1_DKQ3rzKko-yp-Aimy_mTENJOEvUuEmmPwecwZIFuhc/edit?usp=sharing

members can easily integrate into their daily routines and natural environments.

- Providing families with information, skills and support related to enhancing the skill development of the child.
- Collaborating with family members to identify intervention strategies based on the family's priorities and interests, while building upon the strengths of the child.
- Preventing or minimizing the impact of initial or future impairment, delay in development or loss of functional ability.
- Engaging in formal and informal assessment of child to assist with outcome planning to highlight child's areas of growth and progress.

Serves as member of a multidisciplinary core team providing individualized early intervention services to parents, caregivers and family members of eligible infants and toddlers ages birth through three by:

- Participating as a member of a multidisciplinary evaluation team conducting screening, ongoing assessments and evaluations using AzEIP-approved tools and instruments and providing informed clinical opinion in accordance with IDEA, Part C, to assist with initial and ongoing AzEIP, DDD or ASDB eligibility.
- Ensuring that AzEIP approved screening, evaluation and assessment tools and instruments are non-discriminatory and being used as intended.
- Contributing to the development and implementation of the initial and subsequent Individualized Family Service Plans (IFSP) by helping the family to develop

AzEIP Developmental Special Instructionist Job Description

by Chantelle Curtis

GOOGLE DOCS
